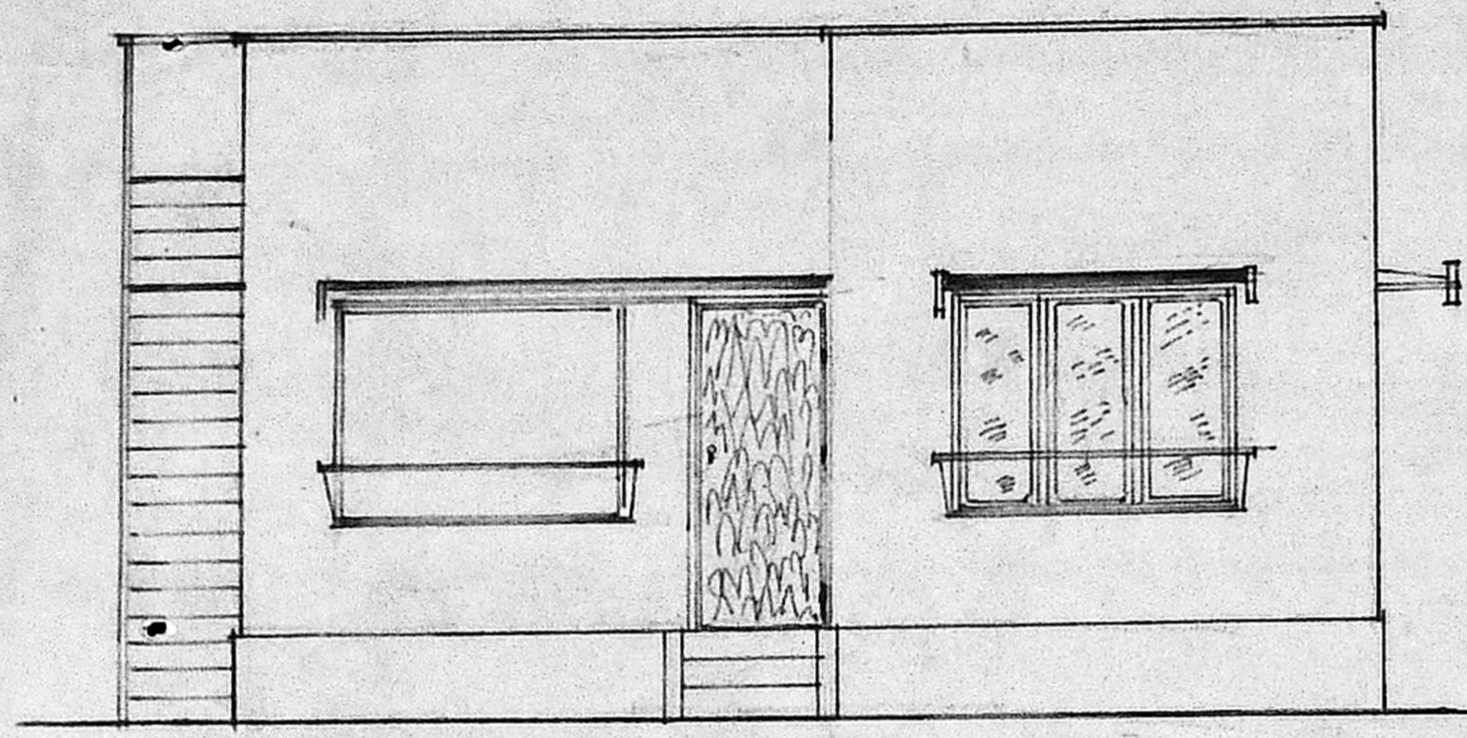
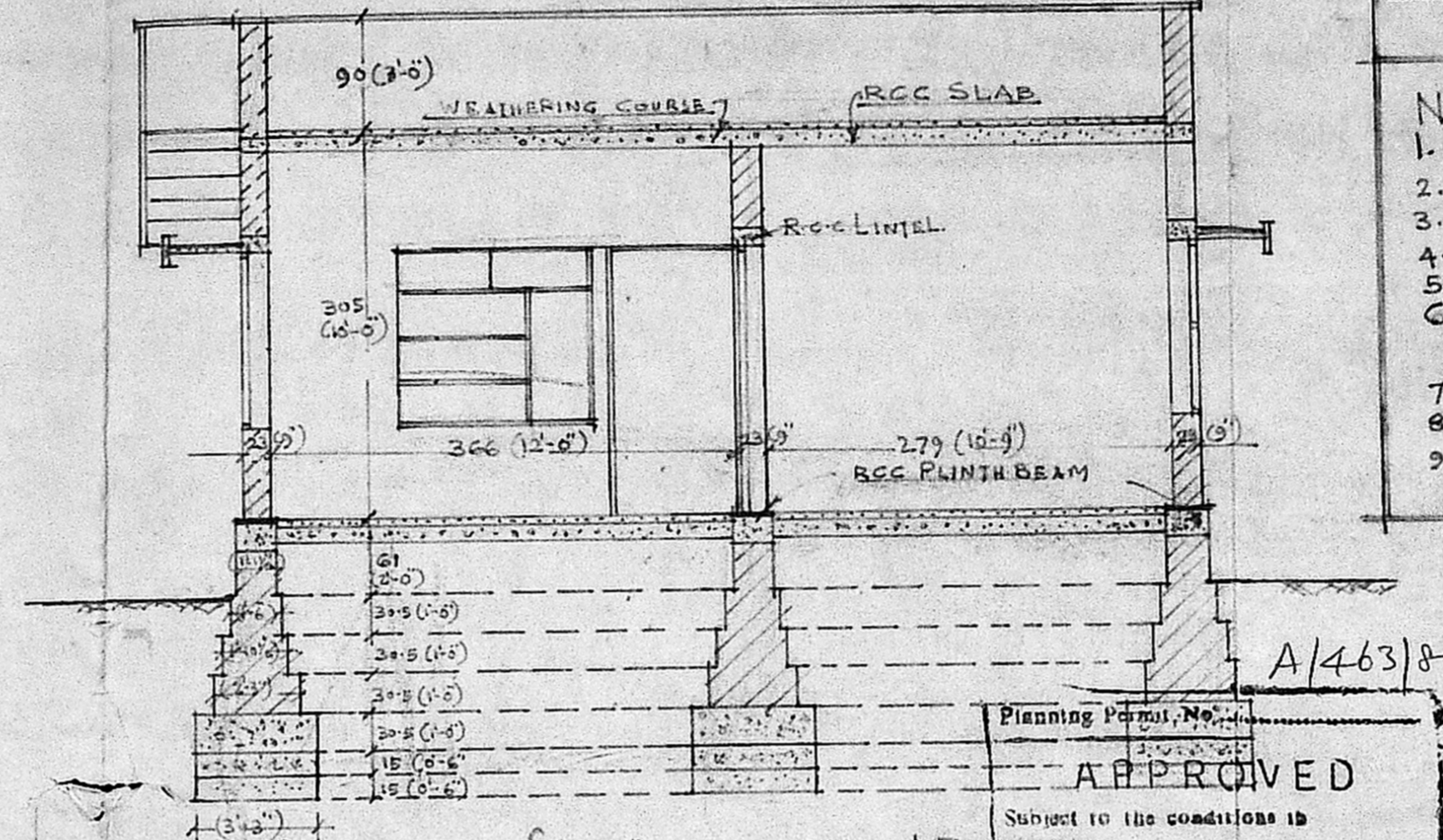


PRO: RESIDANCE IN THIRUVALLUVAR NAGAR
 IN PLOT No 29 OF S.No 274/1&2
 ADAMBAKKAM VILLAGE-ALANDUR MUNICIPALITY
 SCALE: 1/100.

- NOTE.
1. ALL MEASUREMENTS ARE IN CENTIMETRES. EQUIVALENT FOOT UNITS ARE IN BRACKETS.
 2. FOUNDATION WITH STONE JELLY IN C.M 1:4:8 MIX.
 3. MASONRY WITH STOCK BRICK IN C.M 1:4:8 MIX.
 4. PLASTERING WITH C.M 1:4:8 MIX.
 5. ROOFING WITH R.C.C. SLAB, 4 1/2" THICK, 1:2:4 MIX.
 6. FLOORING WITH STONE JELLY IN C.M 1:4:8 MIX 4" THICK & PLASTERED OVER WITH C.M 1:4:8 MIX.
 7. ALL R.C.C. WORKS WITH 1:2:4 MIX WITH NOT LESS THAN 0.8% REINFORCEMENTS.
 8. ALL DOORS & WINDOWS VENTILATORS MADE OF WELL SEASONED TEAK WOOD.
 9. WEATHERING COURSE WITH 12mm BRICK JELLY IN C.M 1:2:4 MIX THICK & FINISHED WITH TWO LAYERS OF FLAT TILES.

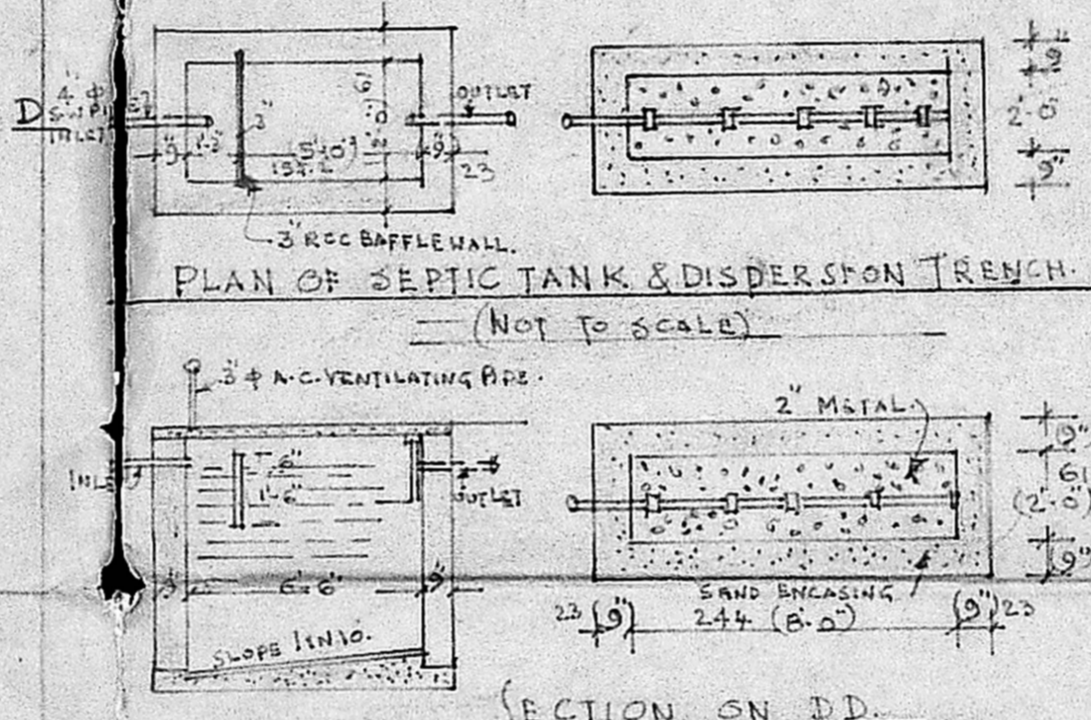


ELEVATION

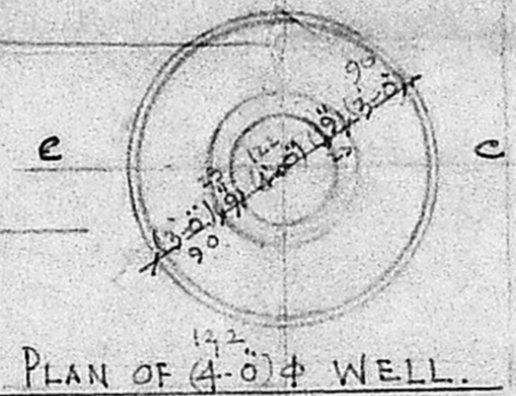


SECTION ON AB

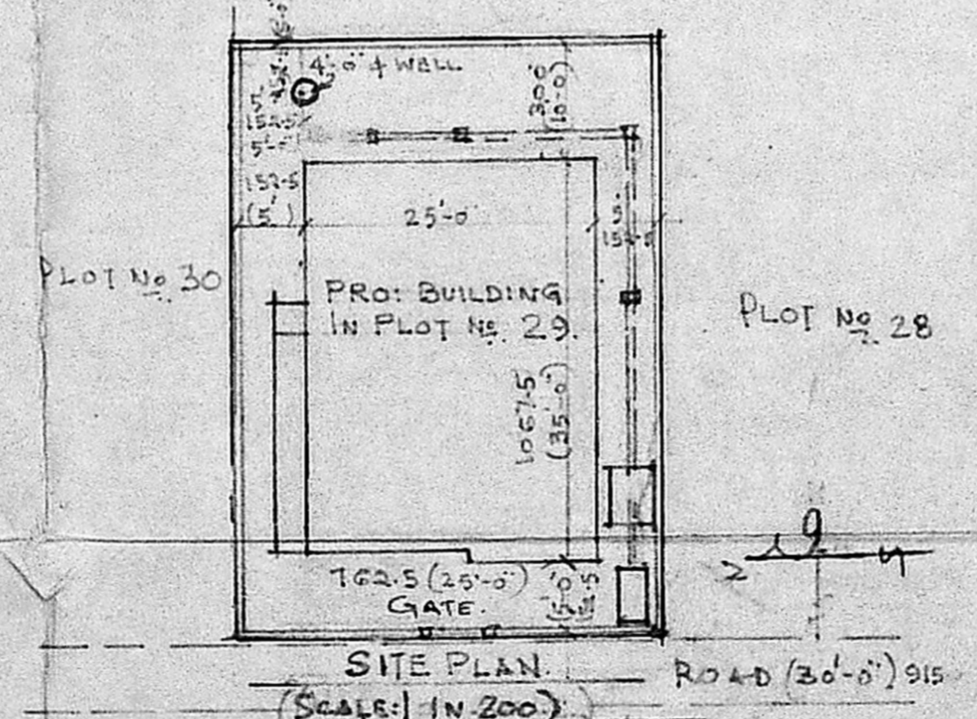
Planning Permit No. A/463/89
APPROVED
 Subject to the conditions in this office letter.
 No. A/3620/89 Dt. 26-5-89
G. Vijayaraj
 FOR MEMBER SECURE
 MUNICIPALITY OF CHENNAI AND
 DEVELOPMENT
 DETAILS OF COMPOUND WALL
 (NOT TO SCALE)



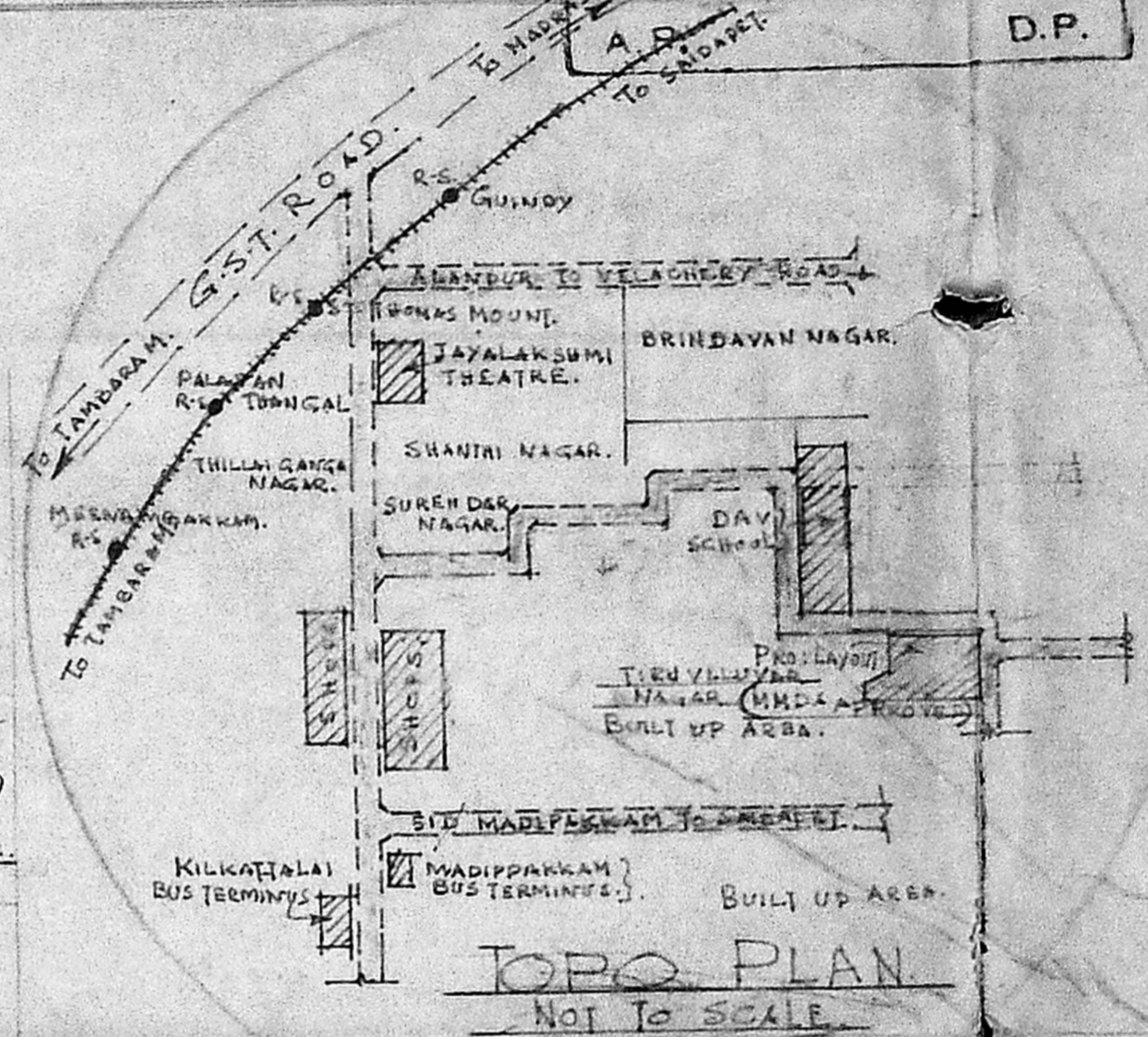
SECTION ON DD



PLAN OF 4" Ø WELL

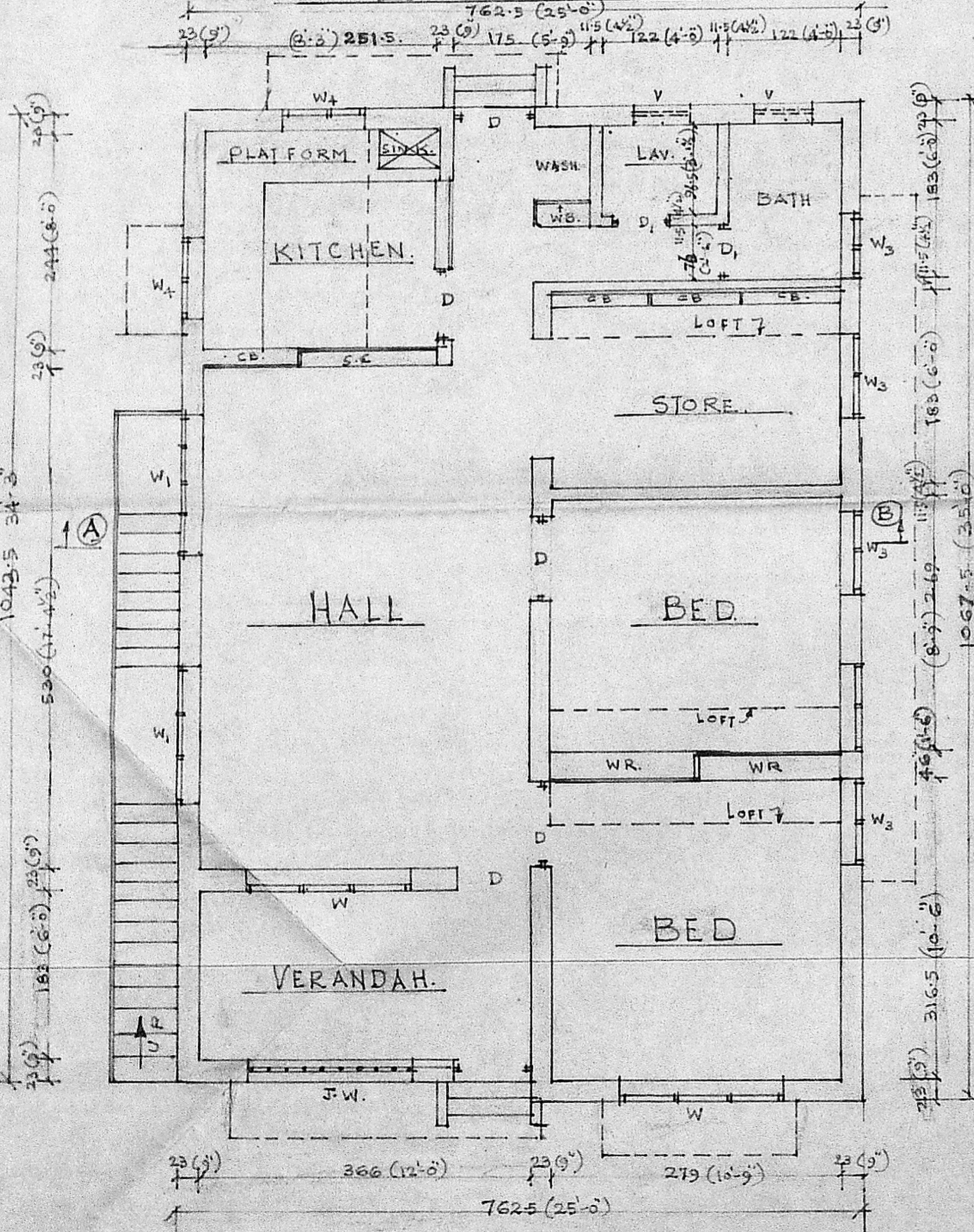


SITE PLAN (SCALE: 1/200)



TOPO PLAN (NOT TO SCALE)

PROPOSALS ARE SHOWN IN RED
 BOUNDARY SHOWN IN BLACK
 ROADS ARE SHOWN IN GREEN



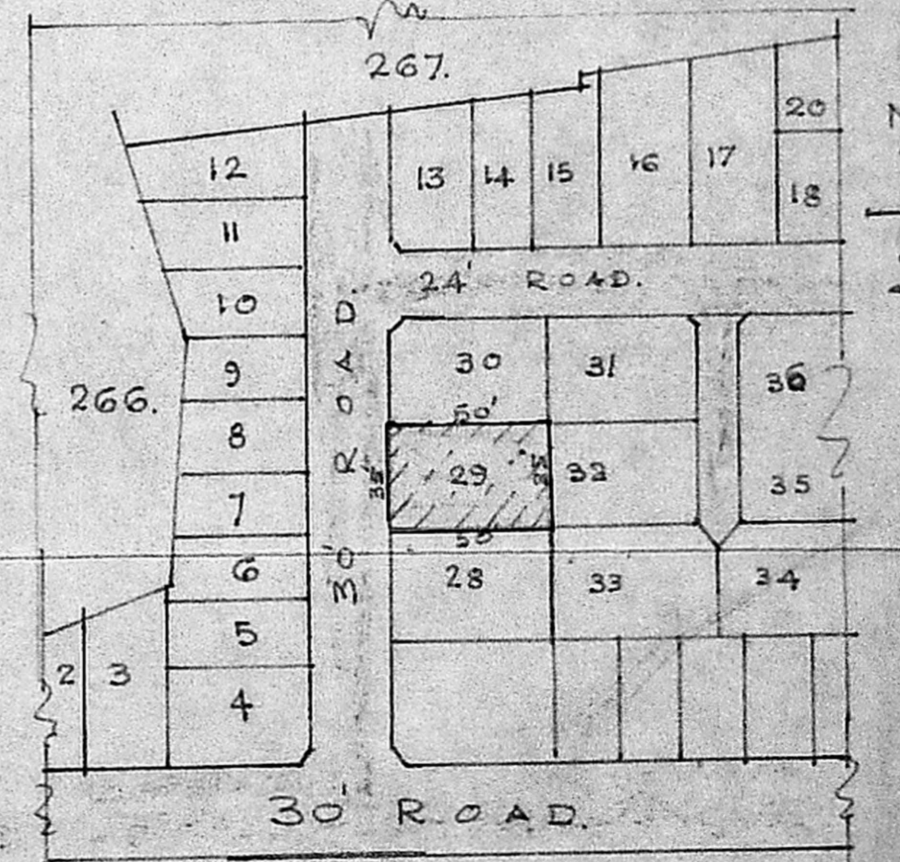
PLAN

SCHEDULE OF JOINERY

D	DOOR PANELLED	90x210.
D1	DOOR PANELLED	76x210.
W1	WINDOW GLAZED	180x137.
W2	WINDOW GLAZED	150x137.
W3	WINDOW GLAZED	90x137.
W4	KITCHEN WINDOW GLAZED	90x105.
V	VENTILATOR GLAZED	60x45.
CB	RCC CUPBOARD	150x210.
SC	RCC SHOW CASE	150x137.
JW	TALLY RCC	180x137.

OWNER

R. PARANDAMAN, D.C.E.
 LICENCED SURVEYOR &
 CONSULTING ENGINEER,
 ALANDUR MUNICIPALITY,
 No. 8, ...
 Adambakkam, Madras-88.



LAYOUT PLAN APPROVED BY MMDA
 IN No. P.P.D. No. 78/84 DATED 5-11-88.
 TIRUVALLUVAR NAGAR
 HOUSE SITES PLOTS IN S.No. 274/1&2
 SCALE 66 TO AN INCH.